



*S.M. Alluminium And Equipments*  
*Strong Materials. Smarter Solutions.*

# **“COMMITMENT TOWARDS QUALITY & SERVICES ”**



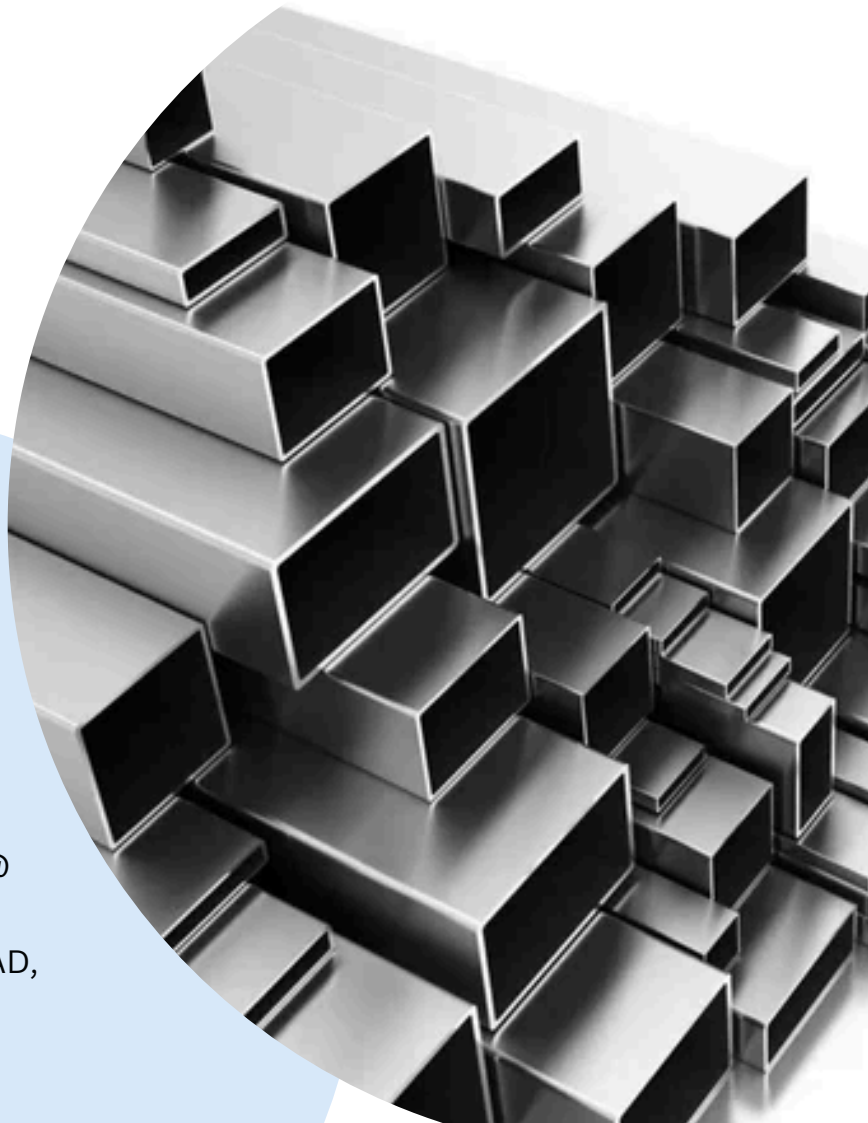
+91 98259 59157



smalluminiumandequipment@  
gmail.com



A39, PALM VILLA2, MAKARPURA ROAD,  
AIR FORCE ROAD, MAKARPURA,  
VADODARA, 390014





# About Company

SM Aluminium & Equipment is a leading industrial organization primarily engaged in the advanced manufacturing of Aluminium Extruded Profiles and Modular Industrial Systems. With a dedicated workforce of over 120+ specialized professionals, our team operates as a cohesive unit across a wide spectrum of technical and commercial functions to deliver "Strong Materials and Smarter Solutions

"Smarter Solutions," the organization leverages a sophisticated infrastructure that integrates advanced metallurgy with precision CNC machining. With a dedicated workforce of over 120+ experts across specialized departments—ranging from R&D and Quality Analysis to Logistics—the company provides a seamless, end-to-end service model

By focusing on technical excellence and structural durability, SM Aluminium delivers lightweight, high-strength solutions tailored for diverse sectors including renewable energy, automotive, and industrial automation. Their commitment to innovation and accuracy ensures that every project is executed with industrial-grade precision, remaining the preferred partner for clients seeking reliable, cost-effective, and custom-engineered aluminium hardware



To be the most trusted global partner in the aluminium extrusion and industrial equipment industry, recognized for driving innovation through sustainable, high-strength materials and smarter engineering solutions.

## OUR VISSION

## OUR MISSION

We are committed to delivering technical excellence, fostering long-term client loyalty, and ensuring every project is completed with accuracy, on time, and within budget.



## VISSION



To become the most critically acclaimed manufacturer in Aluminium Extruded products serving multitude of industries.

To be the first choice for procurement of quality-based aluminium extruded products.

**Shaping the Future of Extrusions by Setting New Standards.**

## CORE VALUES



### Commitment

Do whatever it takes to deliver superior customer value

### Courtesy

Towards our customers employee, vendors and the society at large

### Integrity

Honesty in every action

### Speed

Act with urgency to deliver what we promise

### Teamwork

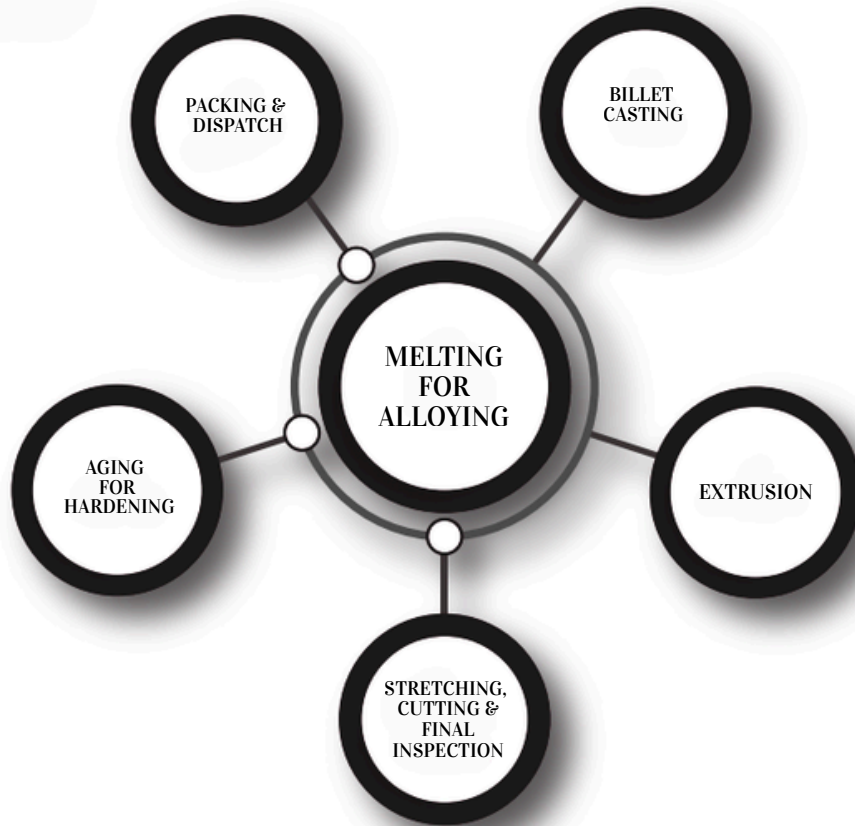
Thinking and working together

**"Guided by our Core Values: Integrity, Respect, Excellence."**





# PROCESS CHART



## 1. MELTING FOR ALLOYING

- Chemical Analysis
- Confirms to quality plan
- Not Confirms to quality plan
- Rejected

## 2. BILLET CASTING

- Bath Sample Chemical Analysis
- Confirms to quality plan
- Not Confirms to quality plan
- Molten Bath Correction

## 3. EXTRUSION

- Final Chemical Analysis
- Identification Bath marking for Traceability
- Ultrasonic Testing for non-metalic inclusion / Volds
- Confirms to Quality Plan
- Not Confirming to quality plan
- Traceability Rearranging

## 4. STRETCHING, CUTTING & FINAL INSPECTION

- Dimension, Flatness, Angularity, Surface etc.
- Confirms to quality plan
- Not Confirms to quality plan
- Rejected & Send for Remelting



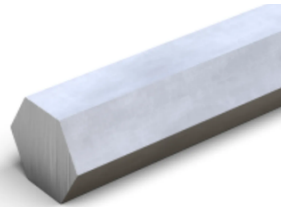
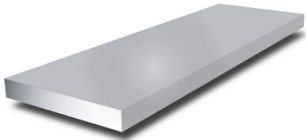
**S.M. Alluminium And Equipments**  
*Strong Materials. Smarter Solutions.*

# Our Products

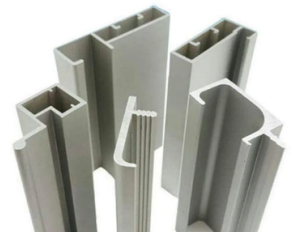
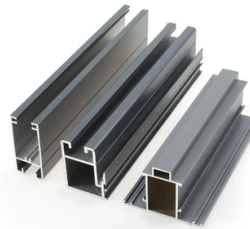
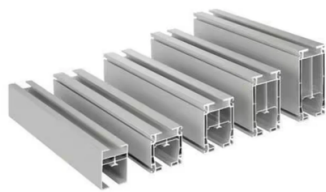
## Industrial Profile



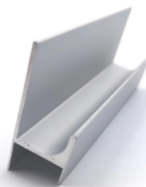
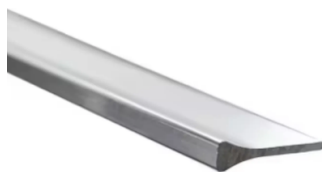
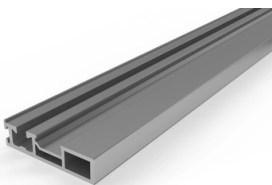
## Standard Profile



## Architectural Profile



## Miscellaneous Works



+91 98259 59157



smalluminium.com



**S.M. Alluminium And Equipments**  
*Strong Materials. Smarter Solutions.*



# Let's Work Together



A39, Palm Villa 2, Makarpura Road, Air Force Road,  
Makarpura, Vadodara, 390014



+91 98259 59157



[smalluminiumandequipment@gmail.com](mailto:smalluminiumandequipment@gmail.com)